

"MAXI" FILTER PRESSURE REGULATOR

B20/B21

Description

High-capacity filter regulator of modular design with exchangeable inserts. Can be interlocked with lubricator without needs for double nipples. Each "maxi" device may be taken from a fixed line in seconds by simply removing the mounting bolts.

Media

compressed air or non-corrosive gases

Supply pressure

max. 17 bar

Adjustment

by plastic knob with snap-lock at B20, by T-handle with locknut at B21

Relieving function

relieving

Gauge port

G $\frac{1}{4}$ on both sides of the body, screw plugs supplied

Bowl

metal version with sight glass

Filter element

40 μ m, optionally 5 μ m, made of polypropylene

Drainage

manual drain as standard, optionally semiautomatic or automatic drain for max. 12 bar

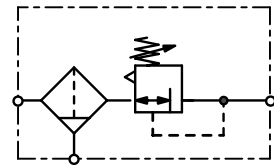
Temperature range

0 °C to 70 °C / 32 °F to 158 °F
up to 50 °C / 122 °F for semiautomatic or automatic drain version

Material

Body: zinc die-cast
Knob (B20): glass fibre-reinforced plastic
Bowl: zinc die-cast
Elastomer: NBR/Buna-N

Spring cage: zinc die-cast
T-handle (B21): steel
Sight glass: polyurethane
Inner valve: brass and plastic



G $\frac{1}{2}$ up to G1

Dimensions			Bowl	Flow	Connection	Pressure	Order
A	B	C	Design	rate	thread	range	number
mm	mm	mm	made of / with	m ³ /h*1	G	bar	

"Maxi" filter regulator				with manual drain, relieving, without gauge, 40 μ m filter element,			without gauge, max. 17 bar		B20
89	289	175	metal/sight glass	0.3	288	4800	G $\frac{1}{2}$	0.2... 4.0	B20-04WJB
								0.3... 9.0	B20-04WJC
								0.5... 17	B20-04WJD
111	289	175	metal/sight glass	0.3	408	6800	G $\frac{3}{4}$	0.2... 4.0	B20-06WJB
								0.3... 9.0	B20-06WJC
								0.5... 17	B20-06WJD
					420	7000	G1	0.2... 4.0	B20-08WJB
								0.3... 9.0	B20-08WJC
								0.5... 17	B20-08WJD



B20 with adjusting knob



B21 with T-handle

Special options, add the appropriate letter

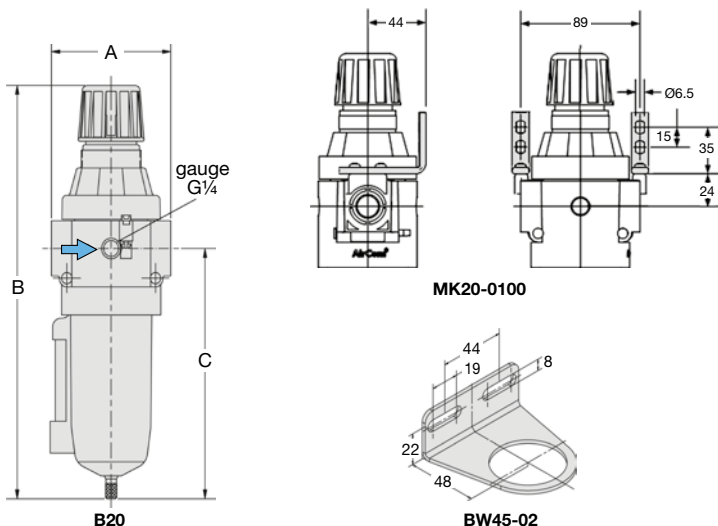
T-handle	including locknut, total height 329 mm	B21-0 . W . .
filter element 5 μ m		B20-0 . WG.
NPT	connection thread	B20-0 . W . .N
non-relieving	without relieving function	B20-0K
semiautomatic drain	RK500SY, max. 12 bar	B20-0 . W . .M
automatic drain	SA605MD, max. 12 bar	B20-0 . W . .R

Accessories, enclosed

pressure gauge	Ø 63 mm, 0...*2 bar, G $\frac{1}{4}$	MA6302-..*2
mounting bracket	mounting at the spring cage	BW45-02
mounting nut	made of plastic	M45x1,5K
	made of aluminium	M45x1,5A
mounting bracket set	made of steel	MK20-0100

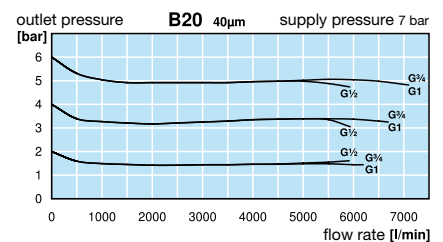


17



RK500SY

SA605MD



*1 at 7 bar supply pressure, 6 bar outlet pressure and 1 bar pressure drop

*2 04 = 0...4 bar, 10 = 0...10 bar, 25 = 0...25 bar

* Product group

Extensions: see chapter for FRL service units
Gauges: see chapter for measuring devices

PDF CAD
www.aircom.net



Order example:
B20-04WJB